

29765 - Ahold Bowl Chkn Caesar 6/6.25oz



29887 - Kit Grill SantaFeSty 14/15.25oz



27022 - SigCafeBowl CaesarChkn4/6.75oz



CHICKEN CAESAR SALAD

Nutrition Facts	Amount/serving	% DV	Amount/serving	% DV
Serv. size 1 container (191g)	Total Fat 18g	23%	Total Carb. 13g	5%
Calories 280 per serving	Sat. Fat 5g	25%	Fiber 2g	7%
	Trans Fat 0g		Total Sugars 3g	
	Cholest. 50mg	17%	Incl. 1g Added Sugars	2%
	Sodium 900mg	39%	Protein 17g	
Vit. D 0% • Calcium 15% • Iron 6% • Potas. 10%				

INGREDIENTS: ROMAINE LETTUCE, CHICKEN BREAST WITH NO MEAT (CHICKEN BREAST MEAT WITH FIB MEAT, WATER, SODIUM LACTATE, SEASONING (SALT, SUGAR, ARTIFICIAL CHICKEN FLAVOR, HYDROLYZED CORN PROTEIN, AUTOLYZED YEAST EXTRACT, THIAMINE HYDROCHLORIDE, DISODIUM INOSINATE, DISODIUM GUANYLATE), DEXTROSE, NATURAL FLAVORING), MODIFIED POTATO STARCH, DEXTROSE, POTASSIUM LACTATE, SODIUM PHOSPHATE, SODIUM DIACETATE, CAESAR DRESSING (WATER, SOYBEAN OIL, PARMESAN CHEESE (PASTEURIZED PART SKIM MILK, CHEESE CULTURES, SALT, ENZYMES), DISTILLED VINEGAR, ENZYME MODIFIED ROMAINE CHEESE (ROMAINE CHEESE (CULTURED MILK, SALT, ENZYMES), FLAVOR (ENZYME MODIFIED ROMAINE CHEESE (CULTURED MILK, WATER, SALT, ENZYMES), SALT), EGG YOLKS, SALT, CORN SYRUP, CONTAINS LESS THAN 2% OF LEMON JUICE CONCENTRATE, SUGAR, GARLIC), SPICES, XANTHAN GUM, POLYSORBATE 60, ONION), SODIUM BENZOATE AND POTASSIUM SORBATE (AS PRESERVATIVES), MOLASSES, ANCHOVIES, LACTIC ACID, NATURAL FLAVORS, DEFATTED SOY FLOUR, CARAMEL COLOR, CALCIUM DISODIUM EDTA (ADDED TO PROTECT FLAVOR), TAMARIND), PARMESAN STYLE CHEESE (PASTEURIZED PART SKIM MILK, SALT, CHEESE CULTURE, ENZYMES, POTATO STARCH AND POWDERED CELLULOSE (TO PREVENT CAKING), NATAMYON (MOLD INHIBITOR), MULTIGRAIN CAESAR CROUTONS (ENRICHED WHEAT FLOUR (WHEAT FLOUR, NIACIN, REDUCED IRON, THIAMINE MONONITRATE, RIBOFLAVIN, FOLIC ACID), CANOLA OIL AND/OR OLIVE OIL, SALT, SUGAR, RYE MEAL, WHEAT BRAN, YEAST, CARAMEL COLOR, DEHYDRATED GARLIC, CORN MEAL, SPICES, CARAWAY SEEDS, NATURAL BUTTER FLAVOR (MILK), OTFIC ACID, ASCORBIC ACID), *DEHYDRATED, CONTAINS: EGG, FISH (ANCHOVY), MILK, SOY, WHEAT.

DISTRIBUTED BY LUCERNE FOODS, INC., P.O. BOX 99, PLEASANTON, CA 94566-0009 1-877-232-4271

QUALITY & SATISFACTION
100% GUARANTEED OR
YOUR MONEY BACK

0 21130 06261 4

100837
RD 19059

smartlabel™
Scan here for more food information

PLEASE RECYCLE

29186 - Salad Bowl Chkn Caesar 6/6.25oz



Chicken Caesar Salad

Nutrition Facts	
Serving Size 1 Container (177g)	
Amount Per Serving	
Calories 230 Calories from Fat 140	
% Daily Value*	
Total Fat 16g	25%
Saturated Fat 4.5g	23%
Trans Fat 0g	
Cholesterol 50mg	17%
Sodium 980mg	41%
Total Carbohydrate 8g	3%
Dietary Fiber 1g	4%
Sugars 3g	
Protein 16g	30%
Vitamin A 50%	Vitamin C 35%
Calcium 25%	Iron 6%

*Percent Daily Values are based on a 2,000 calorie diet. Your daily values may be higher or lower depending on your calorie needs:

	Calories	2,000	2,500
Total Fat	Less than	65g	80g
Sat Fat	Less than	20g	25g
Cholesterol	Less than	300mg	300mg
Sodium	Less than	2,400mg	2,400mg
Total Carbohydrate		300g	375g
Dietary Fiber		25g	30g
Protein		50g	65g

Calories per gram:
Fat 9 • Carbohydrate 4 • Protein 4

INGREDIENTS: ROMAINE LETTUCE, CHICKEN BREAST WITH RIB MEAT (CHICKEN BREAST WITH RIB MEAT, WATER, SODIUM LACTATE, SEASONING (SALT, SUGAR, ARTIFICIAL CHICKEN FLAVOR (WITH HYDROLYZED CORN PROTEIN, AUTOXYZED YEAST EXTRACT, THIAMINE HYDROCHLORIDE, DISODIUM INOSINATE, DISODIUM GUANYLATE), DEXTROSE, NATURAL FLAVORING), MODIFIED POTATO STARCH, DEXTROSE, POTASSIUM LACTATE, SODIUM PHOSPHATES, SODIUM DIACETATE), CAESAR DRESSING (WATER, SOYBEAN OIL, PARMESAN CHEESE (PASTEURIZED PART SKIM MILK, CHEESE CULTURES, SALT, ENZYMES), DISTILLED VINEGAR, ENZYME MODIFIED ROMANO CHEESE (ROMANO CHEESE (CULTURED MILK, SALT, ENZYMES), FLAVOR (ENZYME MODIFIED ROMANO CHEESE: CULTURED MILK, WATER, SALT, ENZYMES), SALT), EGG YOLKS, SALT, CORN SYRUP, CONTAINS LESS THAN 2% OF: LEMON JUICE CONCENTRATE, SUGAR, DEHYDRATED GARLIC, SPICES, XANTHAN GUM, POLYSORBATE 60, DEHYDRATED ONION, SODIUM BENZOATE AND POTASSIUM SORBATE (AS PRESERVATIVES), MOLASSES, ANCHOVY, LACTIC ACID, NATURAL FLAVORS, DEFATTED SOY FLOUR, CARAMEL COLOR, CALCIUM DISODIUM EDTA ADDED (TO PROTECT FLAVOR), TAMARIND), PARMESAN STYLE CHEESE (PARMESAN STYLE CHEESE (PASTEURIZED PART SKIM MILK, SALT, CHEESE CULTURE, ENZYMES), POTATO STARCH AND POWDERED CELLULOSE (TO PREVENT CAKING), NATAMYCIN (A NATURAL MOULD INHIBITOR)).

CONTAINS: SOY, MILK, EGGS, FISH (ANCHOVIES).

gf Made without gluten-containing ingredients.

DIST. BY READY PAC FOODS, INC., IRVINDALE, CA 91706 USA
1-800-800-7822 www.readypac.com
READY PAC, READY PAC Logo and READY PAC BISTRO are registered trademarks of Ready Pac Produce, Inc.

27240 - SF BowIDS ChickCsr Pm\$5 4/12oz



Ingredients

Romaine Lettuce, Caesar Dressing (vegetable Oil [soybean Oil And/or Canola Oil], Water, Parmesan Cheese [part Skim Milk, Rennet, Cultures, Calcium Chloride, Salt], Eggs, Distilled Vinegar, Red Wine Vinegar, Anchovy Paste, Dijon Mustard [water, Vinegar, Mustard Seeds, Salt, Spices], Egg Yolks, Salt, Garlic*, Lemon Juice Concentrate, Sugar, Spices, Natural Flavor, Xanthan Gum, Sodium Benzoate And Potassium Sorbate [as Preservatives], Calcium Disodium Edta [to Protect Flavor]), Chicken Breast With Rib Meat (chicken Breast With Rib Meat, Water, Sodium Lactate, Seasoning [salt, Sugar, Artificial Chicken Flavor {hydrolyzed Corn Protein, Autolyzed Yeast Extract, Thiamine Hydrochloride, Disodium Inosinate, Disodium Guanylate}, Dextrose, Natural Flavoring), Modified Potato Starch, Dextrose, Potassium Lactate, Sodium Phosphates, Sodium Diacetate), Butter Garlic Croutons (enriched Flour [wheat Flour, Malted Barley Flour, Niacin, Reduced Iron, Thiamine Mononitrate, Riboflavin, Folic Acid], Canola And/or Sunflower Oil, Yeast, Sugar, Contains 2% Or Less Of: Salt, Garlic*, Onion Powder, Parsley*, Vinegar, Natural Flavor, Yeast Extract, Butter Oil, Dextrose, Enzyme Modified Milkfat, Annatto [color], Enzymes, Ascorbic Acid, Paprika [color], Tbhq [to Preserve Freshness]), Parmesan Style Cheese (parmesan Style Cheese [pasteurized Part Skim Milk, Salt, Cheese Culture, Enzymes], Potato Starch And Powdered Cellulose [to Prevent Caking], Natamycin [mold inhibitor]).

Warnings

Contains: milk, egg, fish (anchovies), wheat.

Directions

Perishable. Keep Refrigerated.

Nutrition Facts

Serving Size 2.25 cup
Servings Per Container ABOUT 3

Amount Per Serving	
Calories 160	
	% Daily Value
Total Fat 11g	17%
Saturated Fat 2.5g	13%
Trans Fat 0g	
Cholesterol 20mg	7%
Sodium 400mg	17%
Total Carbohydrate 7g	2%
Dietary Fiber 1g	4%
Sugars 2g	
Protein 6g	

Percent Daily Values are based on a 2,000 calorie diet.

27241 - SF BowIDS SW Pm\$5 4/11.75oz



29781 - SigF Bistro Santa Fe 6/6.25oz

Signature Farms™
Quality Guaranteed

CAFÉ BOWL

Santa Fe Style Salad

Romaine Lettuce, White Meat Chicken, Corn, Four Cheese Blend and Tortilla Chips with Salsa Ranch Dressing

280 Calories per Bowl

Fork inside

KEEP REFRIGERATED | PERISHABLE

280 CALORIES
4g SAT FAT (20% DV)
540mg SODIUM (23% DV)
4g SUGARS

10372-11 RD 15069

INSPECTED FOR WHOLESALE BY U.S. DEPARTMENT OF AGRICULTURE

PER BOWL NET WT 6.25 OZ (177 g)

USE BY:

Santa Fe Style Salad

Nutrition Facts

Serving Size
1 container (177g)
Calories 280
Fat Cal. 170

*Percent Daily Values (DV) are based on a 2,000 calorie diet.

Amount Per Serving	% DV*	Amount Per Serving	% DV*
Total Fat 19g	29%	Total Carb. 16g	5%
Sat. Fat 4g	20%	Fiber 2g	8%
Trans Fat 0g		Sugars 4g	
Cholest. 30mg	10%	Protein 11g	
Sodium 540mg	23%		
Vitamin A 90% • Vitamin C 10% • Calcium 10% • Iron 6%			

INGREDIENTS: ROMAINE LETTUCE, SALSA RANCH DRESSING (VEGETABLE OIL (SOYBEAN OIL AND/OR CANOLA OIL), SALSA (TOMATOES, ONIONS, CHILES, GARLIC, SALT, CILANTRO, CITRIC ACID, DARTHIAN GUM), BUTTERMILK (CULTURED SKIM MILK, BUTTERFAT, SALT), SUGAR, WHITE WINE VINEGAR, NATURAL AND ARTIFICIAL FLAVORS, WATER, EGG YOLKS, SALT, JALAPENO PEPPERS, DEHYDRATED GARLIC, PHOSPHORIC ACID, XANTHAN GUM, SPICES, POLYCARBATE, HD, SODIUM BENZOATE AND POTASSIUM SORBATE (AS PRESERVATIVES), DEHYDRATED PARSELEY, CITRIC ACID, CALCIUM DIOXIDE (ADDED TO PROTECT FLAVOR), WHITE MEAT CHICKEN (CHICKEN BREAST WITH RB MEAT, WATER, SEASONING (HYDROLYZED SOY PROTEIN, SUGAR, SALT, BROWN SUGAR, GARLIC)*, SPICES, CHILI PEPPER, PAPRIKA (COLOR), CARRAGEENAN, DEHYDRATED SKI SAUCE (WHEAT STYRENE, SALT), CORN STYRENE SOLIDS, MALTODEXTRIN, NATURAL FLAVORS, LIME JUICE SOLIDS, EXTRACTIVE OF PAPRIKA (COLOR), CONTAINS LESS THAN 2% OF SODIUM LACTATE, POTASSIUM LACTATE, SODIUM PHOSPHATE, SODIUM DIOXIDE), CORN, CHEESE BLEND (MONTEREY JACK CHEESE AND QUESO QUESADILLA CHEESE (PASTEURIZED MILK, CHEESE CULTURE, SALT, ENZYMES), ASADERO CHEESE AND CHEDDAR CHEESE (PASTEURIZED MILK, CHEESE CULTURE, SALT, ENZYMES, ANNATTO (PRESERVABLE COLOR), POTATO STARCH AND MODIFIED CELLULOSE (TO PREVENT CAKING), MONTEREY JACK CHEESE), TORTILLA CHIPS (STONE GROUND WHITE CORN, SUNFLOWER OIL OR CORN OIL, NACHO SEASONING (WHEY)*, SALT, GRANULATED CHEESE (MILK, CHEESE CULTURES, SALT, ENZYMES), CHEDDAR CHEESE* (MILK, CHEESE CULTURES, SALT, ENZYMES), TOMATO*, SOYBEAN OIL, MONTEREY JACK CHEESE* (MILK, CHEESE CULTURES, SALT, ENZYMES), CULTURED WHEY, WHEY PROTEIN CONCENTRATE, LACTULOSE, MALTODEXTRIN, BLUE CHEESE* (MILK, CHEESE CULTURES, SALT, ENZYMES), CULTURED MONTEREY MILK*, ONION*, BUTTERFAT*, LACTIC ACID, CITRIC ACID, SODIUM PHOSPHATE, EXTRACTIVES OF PAPRIKA, GARLIC)*, SPICES, SODIUM CITRATE, EXTRACTIVES OF ANNATTO, CHILI LINE SEASONING (WHEY)*, LIME JUICE*, SOAK CREAM* (SOAK CREAM (CREAM, MONTEREY MILK, SALT, CULTURES), MALTODEXTRIN, SODIUM PHOSPHATE, SUCROSE), SALT, SPICES, PAPRIKA, CITRIC ACID, EXTRACTIVES OF PAPRIKA, SPICE EXTRACTIVE) WATER, TRACE OF LIME). *POWDER CONTAINS: MILK, EGGS, SOY, WHEAT.

DISTRIBUTED BY BETTER LIVING BRANDS LLC
P.O. BOX 99, PLEASANTON, CA 94566-0009 1-888-723-3929
www.betterlivingbrandsLLC.com

OUR PROMISE
QUALITY & SATISFACTION
100%
GUARANTEED
OR YOUR MONEY BACK.



27086 - SigCafe Sthwstern4/6.50oz'18



NET WT 6.5 OZ (184g)

FORK INSIDE
PERISHABLE • KEEP REFRIGERATED

BEST BY

100830

PER CONTAINER



SOUTHWESTERN STYLE SALAD WITH CHICKEN

Nutrition Facts	Amount/serving	% DV	Amount/serving	% DV
	Total Fat 23g	29%	Total Carb. 15g	5%
Serv. size 1 container (184g)	Sat. Fat 5g	25%	Fiber 4g	14%
	Trans Fat 0g		Total Sugars 3g	
	Cholest. 30mg	10%	Incl. 1g Added Sugars	2%
	Sodium 500mg	22%	Protein 12g	
Calories 310 per serving	Vit. D 0% • Calcium 10% • Iron 10% • Potas. 8%			

INGREDIENTS: ROMAINE LETTUCE, SALSA RANCH DRESSING (VEGETABLE OIL (SOYBEAN OIL AND/OR CANOLA OIL), SALSA (TOMATOES, ONIONS, CHILES, GARLIC, SALT, CILANTRO, CITRIC ACID, XANTHAN GUM), BUTTERMILK (CULTURED SWISS MILK, BUTTERFAT, SALT), SUGAR, WHITE WINE VINEGAR, NATURAL AND ARTIFICIAL FLAVORS, WATER, EGG YOLKS, SALT, JALAPENO PEPPERS, DEHYDRATED GARLIC, PHOSPHORIC ACID, XANTHAN GUM, SPICES, POLYSORBATE 60, SODIUM BENZOATE AND POTASSIUM SORBATE (AS PRESERVATIVES), DEHYDRATED PARSLEY, CITRIC ACID, CALCIUM DISODIUM EDTA (ADDED TO PROTECT FLAVOR)), CHICKEN BREAST MEAT WITH RIB MEAT (CHICKEN BREAST MEAT WITH RIB MEAT, WATER, SODIUM LACTATE, SEASONING (SALT, SUGAR, ARTIFICIAL CHICKEN FLAVOR (HYDROLYZED CORN PROTEIN), AUTOLYZED YEAST EXTRACT, THIAMINE HYDROCHLORIDE, DISODIUM INOSINATE, DISODIUM GUANYLATE), DEXTROSE, NATURAL FLAVORING), MODIFIED POTATO STARCH, DEXTROSE, POTASSIUM LACTATE, SODIUM PHOSPHATES, SODIUM DIACETATE), CHEESE BLEND (MONTEREY JACK AND QUESO QUESADILLA CHEESE (PASTEURIZED MILK, CHEESE CULTURE, SALT, ENZYMES), ASADERO AND CHEDDAR CHEESE (PASTEURIZED MILK, CHEESE CULTURE, SALT, ENZYMES, ANNATTO VEGETABLE COLOR), POTATO STARCH AND POWDERED CELLULOSE (TO PREVENT CAKING), NATAMYCIN (MOLD INHIBITOR)), FIRE ROASTED CORN, BLACK BEANS, TORTILLA STRIPS (WHITE, YELLOW AND BLUE CORN MASA FLOUR, SUNFLOWER AND/OR CORN OIL, SEA SALT, BEET JUICE CONCENTRATE (COLOR)), PEPITAS (PUMPKIN SEEDS, OIL (SOYBEAN, CANOLA, AND/OR COTTONSEED), SALT). CONTAINS: EGG, MILK.

DISTRIBUTED BY LUCERNE FOODS, INC., P.O. BOX 99, PLEASANTON, CA 94566-0099 1-877-232-4271

QUALITY & SATISFACTION
100% GUARANTEED OR
YOUR MONEY BACK



smartlabel™
Scan here for
more food
information



100839
RD 19077



27155 - SigCafeDeliChknCaesar4/7.75oz



Nutrition Facts	Amount/serving	% Daily Value	Amount/serving	% Daily Value
	about 2 servings per container			
Serving size 1.5 cup (100g)				
Calories per serving	140			
	Total Fat 9g	12%	Total Carb. 6g	2%
	Saturated Fat 2.5g	13%	Dietary Fiber 1g	4%
	Trans Fat 0g		Total Sugars 1g	
	Cholesterol 25mg	8%	Incl. 1g Added Sugars	2%
	Sodium 400mg	17%	Protein 9g	
	Vitamin D 0% • Calcium 6% • Iron 4% • Potassium 4%			
	Calories per gram: Fat 9 • Carbohydrate 4 • Protein 4			



smartlabel™
Scan here for more food information

INGREDIENTS: ROMAINE LETTUCE, OVEN ROASTED CHICKEN BREAST MEAT WITH RIB MEAT (CHICKEN BREAST MEAT WITH RIB MEAT, WATER, LESS THAN 2% RICE STARCH, LEMON JUICE CONCENTRATE, VINEGAR, SALT, SUGAR, YEAST EXTRACT, NATURAL FLAVORS), CAESAR DRESSING (WATER, SOYBEAN OIL, PARMESAN CHEESE [PASTEURIZED PART SKIM MILK, CHEESE CULTURES, SALT, ENZYMES], DISTILLED VINEGAR, ROMANO CHEESE [PASTEURIZED COW'S MILK, CHEESE CULTURES, SALT, ENZYMES], EGG YOLKS, SALT, SUGAR, CONTAINS LESS THAN 2% OF LEMON JUICE CONCENTRATE, GRANULAR CHEESE [PASTEURIZED MILK, CHEESE CULTURES, SALT, ENZYMES], GARLIC*, SPICES [INCLUDES MUSTARD]), XANTHAN GUM, ONION*, ENZYME MODIFIED CHEESE [CULTURED MILK, WATER, SALT, ENZYMES], ANCHOVY, MOLASSES, LACTIC ACID, NATURAL FLAVORS, GUM ACACIA, ENZYMES, TAMARIND CONCENTRATE, CELERY SEED) PARMESAN CHEESE (PASTEURIZED MILK, CHEESE CULTURES, SALT, ENZYMES, POWDERED CELLULOSE [TO PREVENT CAKING]), MULTIGRAIN CAESAR CROUTON (ENRICHED WHEAT FLOUR [WHEAT FLOUR, NIACIN, REDUCED IRON, THIAMINE MONONITRATE, RIBOFLAVIN, FOLIC ACID], CANOLA OIL AND/OR OLIVE OIL, SALT, SUGAR, RYE MEAL, WHEAT BRAN, YEAST, CARAMEL COLOR, DEHYDRATED GARLIC, CORN MEAL, SPICES, CARAWAY SEEDS, NATURAL BUTTER FLAVOR [MILK], CITRIC ACID, ASCORBIC ACID),*DEHYDRATED

CONTAINS: MILK, EGGS, FISH (ANCHOVY), WHEAT.

DISTRIBUTED BY LUCERNE FOODS, INC., P.O. BOX 99, PLEASANTON, CA 94566-0099 1-877-232-4271
QUALITY & SATISFACTION 100% GUARANTEED OR YOUR MONEY BACK

RD 19157 102037



27157 - SigCafeDeliSouthwest4/9.25oz



Nutrition Facts	Amount/serving	% Daily Value	Amount/serving	% Daily Value
	Total Fat 9g	12%	Total Carb. 8g	3%
about 2.5 servings per container	Saturated Fat 2g	10%	Dietary Fiber 2g	7%
Serving size 1 cup (100g)	Trans Fat 0g		Total Sugars 2g	
Calories 130 per serving	Cholesterol 20mg	7%	Incl. 1g Added Sugars	2%
	Sodium 250mg	11%	Protein 7g	
	Vitamin D 0% • Calcium 4% • Iron 4% • Potassium 4%			
	Calories per gram: Fat 9 • Carbohydrate 4 • Protein 4			



smartlabel™
Scan here
for more food
information

INGREDIENTS: ROMAINE LETTUCE, OVEN ROASTED CHICKEN BREAST MEAT WITH RIB MEAT (CHICKEN BREAST MEAT WITH RIB MEAT, WATER, LESS THAN 2% RICE STARCH, LEMON JUICE CONCENTRATE, VINEGAR, SALT, SUGAR, YEAST EXTRACT, NATURAL FLAVORS), SALSA RANCH DRESSING (VEGETABLE OIL (SOYBEAN OIL AND/OR CANOLA OIL), SALSA (TOMATOES, ONIONS, CHILIES, GARLIC, SALT, CILANTRO, CITRIC ACID, XANTHAN GUM), BUTTERMILK (CULTURED SKIM MILK, BUTTERFAT, SALT), SUGAR, WHITE WINE VINEGAR, NATURAL AND ARTIFICIAL FLAVORS, WATER, EGG YOLKS, SALT, JALAPENO PEPPERS, DEHYDRATED GARLIC, PHOSPHORIC ACID, XANTHAN GUM, SPICES, POLYSORBATE 60, SODIUM BENZOATE AND POTASSIUM SORBATE (AS PRESERVATIVES), DEHYDRATED PARSLEY, CITRIC ACID, CALCIUM DISODIUM EDTA (ADDED TO PROTECT FLAVOR)), FIRE ROASTED CORN, FIRE ROASTED POBLANO PEPPER, BLACK BEANS, PEPPER JACK CHEESE (MONTEREY JACK CHEESE WITH FIESTA PEPPER BLEND (PASTEURIZED MILK, PEPPER BLEND (SWEET CHILI, JALAPENO, SERRANO, HABANERO), CHEESE CULTURE, SALT, ENZYMES), POTATO STARCH (TO PREVENT CAKING), POWDERED CELLULOSE (TO PREVENT CAKING), NATAMYCIN (MOLD INHIBITOR)), TRI-COLOR TORTILLA STRIPS (STONE GROUND WHITE, YELLOW AND BLUE CORN MASA FLOUR, SUNFLOWER AND/OR CORN OIL, SEA SALT, BEET JUICE CONCENTRATE (COLOR)), CARROTS, RED CABBAGE.

CONTAINS: EGGS, MILK.

DISTRIBUTED BY LUCERNE FOODS, INC., P.O. BOX 99, PLEASANTON, CA 94566-0099 1-877-232-4271
QUALITY & SATISFACTION 100% GUARANTEED OR YOUR MONEY BACK



27161 - SigCafeDeli ChcknBLT 4/8.5oz



Nutrition Facts		Amount/serving	% Daily Value	Amount/serving	% Daily Value
about 2.5 servings per container		Total Fat 11g	14%	Total Carb. 3g	1%
Serving size 1 cup (100g)		Saturated Fat 3g	15%	Dietary Fiber 2g	7%
Calories per serving 140		Trans Fat 0g		Total Sugars 1g	
		Cholesterol 25mg	8%	Incl 0g Added Sugars	0%
		Sodium 350mg	15%	Protein 7g	
		Vitamin D 0%	Calcium 4%	Iron 4%	Potassium 4%
		Calories per gram: Fat 9 • Carbohydrate 4 • Protein 4			

INGREDIENTS: ROMAINE LETTUCE, GRAPE TOMATOES, CREAMY AVOCADO DRESSING (SOYBEAN OIL AND/OR CANOLA OIL, WATER, QUACAHOLE (QUACAHOLE, DEHYDRATED ONION, WHITE VINEGAR, SALT, GRANULATED GARLIC), CILANTRO, WHITE WINE VINEGAR, PENTA SEEDS, EGG YOLK, SUGAR, CONTAINS LESS THAN 2% OF: DEHYDRATED RED BELL PEPPER, GARLIC, LACTIC ACID), LIME JUICE CONCENTRATE, NATURAL FLAVORS, SALT, SPICES (CONTAINS MUSTARD, XANTHAN GUM), OVEN ROASTED CHICKEN BREAST MEAT WITH FBI MEAT (CHICKEN BREAST MEAT WITH FBI MEAT, WATER, LESS THAN 2% RICE STARCH, LEMON JUICE CONCENTRATE, VINEGAR, SALT, SUGAR, YEAST EXTRACT, NATURAL FLAVORS), MONTEREY JACK-COLBY CHEESE (MONTEREY JACK CHEESE (PASTEURIZED MILK, CHEESE CULTURE, SALT, ENZYMES), COLBY CHEESE (PASTEURIZED MILK, CHEESE CULTURE, SALT, ENZYMES, ANNATTO (VEGETABLE COLOR), POWDERED CELLULOSE (TO PREVENT CAPPING), NATAMYCN (MOLD INHIBITOR)), BACON (CURED WITH WATER, SALT, SODIUM PHOSPHATES, SODIUM CRYTHORBATE, SODIUM NITRITE, MAY ALSO CONTAIN SUGAR, BROWN SUGAR, AND NATURAL SMOKY FLAVOR).
CONTAINS: MILK, EGGS.

DISTRIBUTED BY LUCERNE FOODS, INC., P.O. BOX 99, PLEASANTON, CA 94586-0099
 1-877-232-4271
 QUALITY & SATISFACTION 100% GUARANTEED OR YOUR MONEY BACK

HD 19142 102049
 0 21130 20820 3

29779 - SigF Bistro ChknCaesar6/6.25oz



27000 - Aldi Bistro ChkCaesar 6/6.25oz



27069 - Bistro Santa Fe 6/6.25oz'18



Santa Fe Style Salad

Nutrition Facts	
Serving Size 1 Container (177g)	
Amount Per Serving	
Calories 270	Calories from Fat 180
% Daily Value*	
Total Fat 20g	31%
Saturated Fat 4.5g	23%
Trans Fat 0g	
Cholesterol 30mg	10%
Sodium 500mg	21%
Total Carbohydrate 14g	5%
Dietary Fiber 1g	4%
Sugars 4g	
Protein 10g	17%
Vitamin A 90%	Vitamin C 10%
Calcium 15%	Iron 6%

*Percent Daily Values are based on a 2,000 calorie diet. Your daily values may be higher or lower depending on your calorie needs:
Calories: 2,000 2,500

Calories per gram:
Fat 9 • Carbohydrate 4 • Protein 4

INGREDIENTS: ROMAINE LETTUCE, SALSA RANCH DRESSING (VEGETABLE OIL, SOYBEAN OIL AND/OR CANOLA OIL), SALSA (TOMATOES, ONIONS, CHILES, GARLIC, SALT, CUMIN, CITRIC ACID, SANTIAGO SOUP, BITTERMELON CULTURED SOY MILK, BITTERMELON SALT), SUGAR, WHITE WINE VINEGAR, NATURAL AND ARTIFICIAL FLAVORS, WATER, EGG YOLKS, SALT, JALAPENO PEPPERS, DEHYDRATED GARLIC, PHOSPHORIC ACID, SANTIAGO SOUP, SPICES, POLYDATE 60, SODIUM BENZOATE AND POTASSIUM SORBATE (AS PRESERVATIVES), DEHYDRATED ONIONS, CITRIC ACID, CALCIUM DISSOLVED (E310) ADDED TO PROTECT FLAVOR, CHICKEN BREAST WITH RIB MEAT (CHICKEN BREAST WITH RIB MEAT, WATER, LEUCONINE HYDROLYZED SOY PROTEIN, SUGAR, SALT, CARAMELIZED SUGAR, GARLIC POWDER, SPICES, CHILI PEPPER, PAPRIKA, LESS THAN 2% OF CARAGEENAN, DEHYDRATED SOY SAUCE (WHEAT, SOYBEANS, SALT), CORN SHIMP SALES, XANTHAN GUM, NATURAL FLAVORS, LIME JUICE CONCENTRATE, EXTRACTIVE OF PAPRIKA (COLOR), SODIUM LACTATE, POTASSIUM LACTATE, SODIUM PHOSPHATE, SODIUM ACETATE), FIRE ROASTED CORN, CHEESE BLEND (MONTEREY JACK AND BLEND), QUESADILLA CHEESE, PASTEURIZED MILK CHEESE (CULTURE, SALT, ENZYMES, KASEOIN AND QUESADILLA CHEESE, PASTEURIZED MILK, CHEESE CULTURE, SALT, ENZYMES, MINIMO VEGETABLE COLOR), POTATO STARCH AND POWDERED CELLULOSE (TO PREVENT CLUMPING), MONOPHENOL (A NATURAL WILD INFESTOR), SEASONED TORTILLA CHIPS (STONE GROUND CORN, MASA FLOUR, SAMPANER AND/OR SAFFLOWER OIL, WATER, SEASONING (WHEY SALT LACTATE, TONATE POWDER, BITTERMELON, CULTURED NONFAT MILK, WHEY PROTEIN CONCENTRATE, XANTHAN GUM, ONION POWDER, ENZYME, MODIFIED ROMAINE CHEESE, (PRE-CURED) CORN MILK, CULTURES, SALT, ENZYMES, NATURAL FLAVOR, CITRIC ACID, LACTIC ACID, GARLIC POWDER, CHILI PEPPER, EXTRACTIVE OF PAPRIKA (COLOR), CHILI LIME SEASONING (WHEY SOUP CREAM POWDER, CULTURED CREAM, NONFAT MILK, SALT, SPICES, PAPRIKA, CITRIC ACID, NATURAL LIME FLAVOR, EXTRACTIVE OF PAPRIKA, SPICE EXTRACTIVE)).

CONTAINS: MILK, EGGS, SOY, WHEAT.

0 7774529188 8

101257

DIST. BY READY PAC FOODS, INC., IRVINDALE, CA 91706 USA
1-800-800-7822 www.readypac.com
READY PAC, READY PAC Logo and READY PAC BISTRO
are registered trademarks of Ready Pac Produce, Inc.

29619 - Bowl Bistro Caesar 9-2/6.25oz (BJ's 2pk)



Chicken Caesar Salad

Nutrition Facts		*Percent Daily Values are based on a 2,000 calorie diet. Your daily values may be higher or lower depending on your calorie needs.	
Serving Size 1 Container (177g)		Calories: 230 250	
Amount Per Serving			
Calories 230		Calories from Fat 140	
		% Daily Value*	
Total Fat 16g	25%	Total Fat	Less than 65g 80g
Saturated Fat 4.5g	23%	Sat Fat	Less than 20g 25g
Trans Fat 0g		Cholesterol	Less than 300mg 300mg
Cholesterol 50mg	17%	Sodium	Less than 2,400mg 2,400mg
Sodium 980mg	41%	Total Carbohydrate	300g 375g
Total Carbohydrate 8g	3%	Dietary Fiber	25g 30g
Dietary Fiber 1g	4%	Protein	50g 65g
Sugars 3g		Calories per gram: Fat 9 • Carbohydrate 4 • Protein 4	
Protein 16g	30%	INGREDIENTS: ROMAINE LETTUCE, CHICKEN BREAST WITH RIB MEAT (CHICKEN BREAST WITH RIB MEAT, WATER, SODIUM LACTATE, SEASONING (SALT, SUGAR, ARTIFICIAL CHICKEN FLAVOR (WITH HYDROLYZED CORN PROTEIN, AUTOLYZED YEAST EXTRACT, THIAMINE HYDROCHLORIDE, DISODIUM INOSINATE, DISODIUM GUANYLATE), DEXTROSE, NATURAL FLAVORING), MODIFIED POTATO STARCH, DEXTROSE, POTASSIUM LACTATE, SODIUM PHOSPHATES, SODIUM DIACETATE), CAESAR DRESSING (WATER, SOYBEAN OIL, PARMESAN CHEESE (PASTEURIZED PART SKIM MILK, CHEESE CULTURES, SALT, ENZYMES), DISTILLED VINEGAR, ENZYME MODIFIED ROMANO CHEESE (ROMANO CHEESE (CULTURED MILK, SALT, ENZYMES), FLAVOR (ENZYME MODIFIED ROMANO CHEESE, CULTURED MILK, WATER, SALT, ENZYMES), SALT), EGG YOLKS, SALT, CORN SYRUP, CONTAINS LESS THAN 2% OF: LEMON JUICE CONCENTRATE, SUGAR, DEHYDRATED GARLIC, SPICES, XANTHAN GUM, POLYSORBATE 60, DEHYDRATED ONION, SODIUM BENZOATE AND POTASSIUM SORBATE (AS PRESERVATIVES), MOLASSES, ANCHOVY, LACTIC ACID, NATURAL FLAVORS, DEFFATED SOY FLOUR, CARAMEL COLOR, CALCIUM DISODIUM EDTA ADDED (TO PROTECT FLAVOR), TAMARIND, PARMESAN STYLE CHEESE (PARMESAN STYLE CHEESE (PASTEURIZED PART SKIM MILK, SALT, CHEESE CULTURE, ENZYMES), POTATO STARCH AND POWDERED CELLULOSE (TO PREVENT CAVING), NATAMYCON (A NATURAL MOLD INHIBITOR), CONTAINS: SOY, MILK, EGGS, FISH (ANCHOVIES).	
Vitamin A 50%	• Vitamin C 35%	Made without gluten-containing ingredients.	
Calcium 25%	• Iron 6%	DIST. BY READY PAC FOODS, INC., IRVINDALE, CA 9706 USA 1-800-800-7822 www.readypac.com	

READY PAC, READY PAC Logo and READY PAC BISTRO are registered trademarks of Ready Pac Produce, Inc.

27111 - Bonduelle Caesar 6/6.15oz



Caesar Salad with Chicken and Bacon
Salade César au poulet et au bacon

Nutrition Facts		Valeur nutritive	
Per 1 bowl (174 g)			
pour 1 bol (174 g)			
Calories 310	% Daily Value*	% valeur quotidienne*	
Fat / Lipides 22 g	29 %		
Saturated / saturés 6 g	32 %		
+ Trans / trans 0.3 g			
Carbohydrate / Glucides 10 g			
Fibre / Fibres 2 g	7 %		
Sugars / Sucres 2 g	2 %		
Protein / Protéines 18 g			
Cholesterol / Cholestérol 55 mg			
Sodium 1020 mg	44 %		
Potassium 400 mg	9 %		
Calcium 200 mg	15 %		
Iron / Fer 1.5 mg	8 %		

*% Daily Value is based on a diet of other people's secrets.

Ingredients: Romaine lettuce, Caesar dressing, butter, soybean oil, parmesan cheese (pasteurized partly skimmed milk, bacterial culture, salt, microbial enzymes), distilled vinegar, romano cheese (pasteurized milk, bacterial culture, salt, microbial enzymes), liquid egg yolk, salt, sugar, concentrated lemon juice, granular cheese (pasteurized milk, bacterial culture, salt, microbial enzymes), dehydrated garlic, spices (mustard, xanthan gum), dehydrated onion, enzyme modified cheese (cultured milk, water, salt, microbial enzymes), anchovy, milk, lactic acid, natural flavours, gum arabic, microbial enzymes, tamarind concentrate, celery seed, Ovea roasted dried seasoned chicken breast (chicken breast, water, concentrated lemon juice, vinegar, salt, sugar, yeast extract, natural flavour), Parmesan cheese (pasteurized milk, bacterial culture, salt, chymosin), Bacon (cured, wilted, water, salt, sodium phosphates, sodium erythorbate, sodium nitrite. May also contain sugar, brown sugar and smoke flavour), Croutons (enriched flour, canola and/or sunflower oil with mono and diacylglycerol and ascorbic acid (to preserve freshness), yeast, sugar, salt, dehydrated garlic, onion powder, dehydrated parsley, natural flavour (milk)), yeast extract, dextrose, butter oil, annatto (colour), natural smoke flavour.

Contains: Egg, Fish (anchovy), Milk, Wheat, Mustard

Ingredients: Laitue romaine, Vinaigrette César (eau, huile de soja, fromage parmesan (lait partiellement écrémé pasteurisé, culture bactérienne, sel, enzymes microbiennes), vinaigre distillé), fromage romano (lait pasteurisé, culture bactérienne, sel, enzymes microbiennes), jaunes d'œufs liquides, sel, sucre, jus de citron concentré, fromage granuleux (lait pasteurisé, culture bactérienne, sel, enzymes microbiennes), ail déshydraté, épices (moutarde, pomme de terre, oignon déshydraté), fromage modifié par enzymes (lait de culture, eau, sel, enzymes microbiennes, anchois, mélange acide lactique, arômes naturels, quinine acacia, enzymes microbiennes, concentré de tamarin, graines de céleri), Robine de poulet en dés assaisonné et frite au four (poulet de poulet, eau, jus de citron concentré, vinaigre, sel, sucre, extrait de levure, arômes naturels), Fromage parmesan (lait pasteurisé, culture bactérienne, sel, chymosin), Bacon (frité avec : eau, sel, phosphates de sodium, érythorbate de sodium, nitrite de sodium. Peut aussi contenir : sucre, caséinate et arôme de fumée), Croutons (farine enrichie, huile de canola et/ou de tournesol (avec extrait de romarin et acide ascorbique (pour conserver la fraîcheur)), levure, sucre, sel, ail déshydraté, poudre d'oignon, persil déshydraté, arômes naturels (lait), extrait de levure, dextrose, huile de levure, sucre (colorant), arôme naturel de fumée).

Contient: Œuf, Poisson (anchovy), Lait, Blé, Moutarde

DST BY / DISTR. PAR: BONDUELLE FRESH AMERICAS
IRVINDALE, CA 9706 USA 800-800-7822

29758 - Domino's GB Caesar 6/7.0oz



27138 - GE Bowl Chkn Caesar 6/6.25oz



101626

CHICKEN CAESAR SALAD 0 30034 92370 9

100% satisfaction or double your money back.

Nutrition Facts		Amount Per Serving	%DV*	Amount Per Serving	%DV*
Serving Size 1 bowl (177g)		Total Fat 16g	25%	Total Carb 8g	3%
Calories 230		Sat Fat 4.5g	23%	Dietary Fiber 1g	4%
Calories from Fat 140		Trans Fat 0g		Sugars 3g	
		Cholesterol 50mg	17%	Protein 16g	
		Sodium 980mg	41%		
*Percent Daily Values (DV) are based on a 2,000 calorie diet.		Vitamin A 50% • Vitamin C 35% • Calcium 25% • Iron 6%			

INGREDIENTS: ROMAINE LETTUCE, CHICKEN BREAST WITH HB MEAT (CHICKEN BREAST WITH HB MEAT, WATER, SODIUM LACTATE, SEASONING (SALT, SUGAR, ARTIFICIAL CHICKEN FLAVOR (WITH HYDROLYZED CORN PROTEIN, AUTOLYZED YEAST EXTRACT, THIAMINE HYDROCHLORIDE, DICHLORINE DIOXIDE), DISODIUM GUANYLATE), DEXTROSE, NATURAL FLAVORING), MODIFIED POTATO STARCH, DEXTROSE, POTASSIUM LACTATE, SODIUM PHOSPHATES, SODIUM DIACETATE), CAESAR DRESSING (WATER, SOYBEAN OIL, PARMESAN CHEESE (PASTEURIZED PART SKIM MILK, CHEESE CULTURES, SALT, ENZYMES), DISTILLED VINEGAR, ENZYME MODIFIED ROMANO CHEESE (ROMANO CHEESE (CULTURED MILK, SALT, ENZYMES), FLAVOR (ENZYME MODIFIED ROMANO CHEESE (CULTURED MILK, WATER, SALT, ENZYMES), SALT), EGG YOLKS, SALT, CORN SYRUP, CONTAINS LESS THAN 2% OF LEMON JUICE CONCENTRATE, SUGAR, DEHYDRATED GARLIC, SPICES, XANTHAN GUM, POLYSORBATE 60), DEHYDRATED ONION, SODIUM BENZOATE AND POTASSIUM SORBATE (AS PRESERVATIVES), MOLASSES, ANCHOVY, LACTIC ACID, NATURAL FLAVORS, DEFTED SOY FLOUR, CARAMEL COLOR, CALCIUM DIODECIUM EDTA ADDED (TO PROTECT FLAVOR), TANNINOL, PARMESAN STYLE CHEESE (PARMESAN STYLE CHEESE (PASTEURIZED PART SKIM MILK, SALT, CHEESE CULTURE, ENZYMES), POTATO STARCH AND POWDERED CELLULOSE (TO PREVENT CLUMPING), NATAMYCIN (A NATURAL MOULD INHIBITOR)), CONTAINS: EGG, MILK, SOY, FISH (ANCHOVIES)

DISTRIBUTED BY GIANT EAGLE, INC. PITTSBURGH, PA 15238-2808
 © 2018 GIANT EAGLE, INC.
 QUESTIONS? COMMENTS? CALL 1-800-553-2324
 GiantEagle.com

27112 - Bonduelle Cobb Salad 6/7.25



Cobb Salad with Turkey and Bacon
Salade Cobb à la dinde et au bacon

Nutrition Facts
Valeur nutritive

Per 1 bowl (206 g)
pour 1 bol (206 g)

Calories 220	% Daily Value*
Fat / Lipides 15 g	20 %
Saturated / saturés 3.5 g	18 %
+ Trans / trans 0.1 g	
Carbohydrate / Glucides 8 g	
Fibre / Fibres 2 g	7 %
Sugars / Sucres 5 g	5 %
Protein / Protéines 13 g	
Cholesterol / Cholestérol 110 mg	
Sodium 860 mg	37 %
Potassium 300 mg	6 %
Calcium 75 mg	6 %
Iron / Fer 1.25 mg	7 %

*% Daily Value is based on a diet of other people's secrets.
*% la valeur quotidienne est basée sur un régime de secrets d'autres personnes.

Ingredients: Lettuce mix (iceberg and romaine lettuces), Bleu cheese dressing (water, soybean oil and/or canola oil, distilled vinegar, bleu cheese (pasteurized milk, bacterial culture, salt, lipase, penicillium roqueforti, cellulose (to prevent caking), natamycin (to protect flavour)), sugar, liquid egg yolk, salt, dehydrated buttermilk, cornstarch, concentrated lemon juice, natural flavours, spices (mustard, xanthan gum). Diced smoked cooked turkey breast (turkey breast, water, vinegar, potato starch, sea salt, potassium chloride, cultured celery powder, carrageenan, rosemary extract, smoke), Egg (hard cooked eggs, citric acid, sodium benzoate and nisin preparation (as preservatives)), Bacon (cured with water, salt, sodium phosphates, sodium erythorbate, sodium nitrite. May also contain: sugar, brown sugar and smoke flavour).

Contains: Egg, Milk, Mustard

Ingédients : Mélange de laitues (laitues iceberg et romaine), Vinaigrette au fromage bleu (eau, huile de soja et/ou huile de canola, vinaigre distillé, fromage bleu [lait pasteurisé, culture bactérienne, sel, lipase, penicillium roqueforti, cellulose (pour empêcher l'agglomération), natamycine (pour protéger la saveur)], sucre, jaune d'œuf liquide, sel, babeurre déshydraté, amidon de maïs, jus de citron concentré, arômes naturels, épices [moutarde], gomme xanthane). Poitrine de dinde cuite et fumée en dés (poitrine de dinde, eau, vinaigre, fécule de pomme de terre, sel de mer, chlorure de potassium, poudre de céleri de culture, carraghénine, extrait de romarin, fumée). Œufs (œufs durs, acide citrique, préparation de benzoate de sodium et de nisine [comme agent de conservation]), Bacon (traité avec : eau, sel, phosphates de sodium, erythorbate de sodium, nitrite de sodium. Peut aussi contenir : sucre, cassonade et arôme de fumée).

Contient : Œuf, Lait, Moutarde

0 77745 27112 5
10514

Bonduelle est une entreprise canadienne.
Registered Trademark of Bonduelle
Marque déposée de Bonduelle

DIST BY / DIST PAR BONDUELLE FRESHAMERICAS
BIRNDALE, CA 91706 USA 800-800-7822

27113 - Bonduelle Chef Salad 6/7.75



Chef Inspired Salad with Turkey & Ham
Salade style du Chef à la dinde et au jambon

Nutrition Facts		Valeur nutritive	
Per 1 bowl (220 g) pour 1 bol (220 g)			
Calories 270	% Daily Value*	% valeur quotidienne*	
Fat / Lipides 20 g	27 %		
Saturated / saturés 4 g	21 %		
+ Trans / trans 0.2 g			
Carbohydrate / Glucides 9 g			
Fibre / Fibres 2 g	7 %		
Sugars / Sucres 4 g	4 %		
Protein / Protéines 14 g			
Cholesterol / Cholestérol 45 mg			
Sodium 700 mg	30 %		
Potassium 500 mg	11 %		
Calcium 175 mg	13 %		
Iron / Fer 1 mg	6 %		

*% Daily Value is based on a diet of other people's secrets.
*% la valeur est basée sur un régime secret d'autres personnes.

Ingredients: Lettuce mix (iceberg & romaine lettuces), Ranch dressing (canola oil, cultured buttermilk [whey, water, skim milk powder, corn starch], tapioca starch, carrageenan, locust bean gum), bacterial culture, water, maltodextrin, white wine vinegar, liquid egg yolk, salt, sugar, buttermilk powder, distilled vinegar, seasoning blend (salt, maltodextrin, modified corn starch, dried onion, dried garlic, autolyzed yeast extract, natural flavour, spice, parsley, guar gum), sodium citrate, dextrose, xanthan gum, butter, dried garlic, dried onion, spices, mustard flour, natural flavours, modified corn starch), Smoked cooked turkey breast strips (turkey breast, water, vinegar, potato starch, sea salt, potassium chloride, cultured celery powder, carrageenan, rosemary extract, smoke), Smoked chopped ham strips (ham, water, vinegar, sea salt, potassium chloride, turbinado sugar, cultured celery powder, cherry powder, rosemary extract, smoke), Swiss cheese (swiss cheese [pasteurized milk, bacterial culture, salt, chymosin], powdered cellulose).

Contains: Egg, Milk, Mustard

Ingredients: Mélange de laitues (laitues iceberg et romaine), Vinaigrette ranch (huile de canola, babeurre de culture [lactosérum, eau, poudre de lait écrimé, amidon de maïs, amidon de tapioca, carraghénine, gomme de caroube, culture bactérienne], eau, maltodextrine, vinaigre de vin blanc, jaune d'œuf liquide, sel, sucre, poudre de babeurre, vinaigre distillé, mélange d'assaisonnements [sel, maltodextrine, amidon de maïs modifié, oignon séché, ail séché, extrait de levure autolyse, arôme naturel], épice, persil, gomme de guar), citrate de sodium, dextrose, gomme xanthane, beurre, ail séché, oignon séché, épices, farine de moutarde, arômes naturels, amidon de maïs modifié), Lanières de poitrine de dinde cuite et fumée (poitrine de dinde, eau, vinaigre, fécule de pomme de terre, sel de mer, chlorure de potassium, poudre de céleri de culture, carraghénine, extrait de romarin, fumée), Lanières coupées de jambon fumé (jambon, eau, vinaigre, sel de mer, chlorure de potassium, sucre turbiné, poudre de céleri de culture, poudre de cerise, extrait de romarin, fumée), Fromage suisse (fromage suisse [lait pasteurisé, culture bactérienne, sel, chymosine], cellulose en poudre).

Contient: Œuf, Lait, Moutarde

0 77745 27113 2
101516

Bonduelle est Bonduelle Long et
Registered trademarks of Bonduelle
Kendall et le logo Bonduelle sont
des marques déposées de Bonduelle.

DIST BY / DIST. PAR: BONDUELLE FRESHAMERICAS
RINDALE, CA 91706 USA 800-800-7822

27114 - Bonduelle SantaFe Salad 6/6.25



Santa Fe Style Salad with Chicken
Salade style Santa Fe au poulet

WITH FIRE-ROASTED CORN, CHEESE, TORTILLA CHIPS AND SALSA RANCH DRESSING
 AVEC MAÏS GRILLÉ À LA FLAMME, FROMAGE, CROUSTILLES DE TORTILLAS ET VINAIGRETTE SALSA RANCH

No Artificial Flavours
 Sans arômes artificiels

280 CALORIES
 PER BOWL / PAR BOL

10g PROTEIN
 DE PROTÉINES
 PER BOWL / PAR BOL

HIGH IN PROTEIN
 TENEUR ÉLEVÉE
 EN PROTÉINES



Santa Fe Style Salad with Chicken
 Salade style Santa Fe au poulet

Nutrition Facts Valeur nutritive	
Per 1 bowl (177 g) pour 1 bol (177 g)	
Calories 280	% Daily Value*
Fat / Lipides 20 g	27 %
Saturated / saturés 4.5 g	24 %
+ Trans / trans 0.2 g	
Carbohydrate / Glucides 14 g	
Fibre / Fibres 3 g	11 %
Sugars / Sucres 4 g	4 %
Protein / Protéines 10 g	
Cholesterol / Cholestérol 35 mg	
Sodium 470 mg	20 %
Potassium 350 mg	7 %
Calcium 125 mg	10 %
Iron / Fer 1.25 mg	7 %

*% Daily Value is based on a diet of other people's secrets.

Ingredients: Bonduelle® lettuce, Santa Fe ranch dressing (salsa (tomatoes, onions, chiles, garlic, salt, citric acid, and potassium sorbate) and chicken breast), lettuce, chicken breast, corn, cheese, tortilla chips, and salsa ranch dressing. **Contains:** chicken, wheat, soy, and milk. **Contains 280 calories.** For more information, visit www.bonduelle.com.

101518

0 77745 27114 9

Bonduelle and Bonduelle logo are registered trademarks of Bonduelle. Bonduelle et le logo Bonduelle sont des marques déposées de Bonduelle.

DIST BY / DIST. PAR BONDUELLE FRESH AMERICAS
 BONDUELLE, CA 91016 USA 800-900-7822

27249 - Sams ABF ChknCsar 12-2/6.25oz



27076 - Bowl GB SW 4/11.5oz '18



Southwestern Style Salad

Nutrition Facts

Serving Size 1 Container (326g)

Amount Per Serving

Calories 470 Calories from Fat 270

% Daily Value*

Total Fat 30g **46%**

Saturated Fat 6g **30%**

Trans Fat 0g

Cholesterol 55mg **18%**

Sodium 1070mg **45%**

Total Carbohydrate 27g **9%**

Dietary Fiber 5g **20%**

Sugars 7g

Protein 25g

Vitamin A 40% • Vitamin C 15%

Calcium 10% • Iron 15%

*Percent Daily Values are based on a diet of 2,000 calories. Your daily values may be higher or lower depending on your calorie needs.

Calories: 2,000 2,500

Total Fat Less than 65g 80g

Sat Fat Less than 20g 25g

Cholesterol Less than 300mg 300mg

Sodium Less than 2,400mg 2,400mg

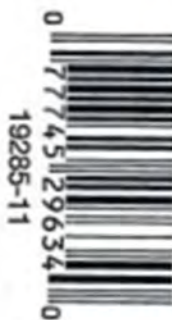
Total Carbohydrate 300g 270g

Dietary Fiber 25g 20g

Calories per gram:

Fat 9 • Carbohydrate 4 • Protein 4

INGREDIENTS: ICEBERG AND ROMAINE LETTICES, CHICKEN BREAST WITH RIB MEAT, CHICKEN BREAST WITH RIB MEAT, WATER, SEASONING (HYDROLYZED SOY PROTEIN, SUGAR, SALT, BROWN SUGAR, GARLIC POWDER, SPICES, CHILI PEPPER, PAPRIKA (COLOR), CHIVES/ONION, DEHYDRATED SOY SAUCE (WATER, SOYBEANS, SALT), CORN STARCH/SOLUBLE, MALTODEXTRIN, NATURAL FLAVORS, LIME JUICE SOLIDS, EXTRACTIVE OF PAPRIKA (COLOR), CONTAINS LESS THAN 2% OF: SOYBEAN LACTATE, POTASSIUM LACTATE, SODIUM PHOSPHATE, SODIUM BICARBONATE), SALSA RANCHO DRESSING (VEGETABLE OIL, SOYBEAN OIL, AVOCADO OIL, SALT, SUGAR, TOMATOES, ONIONS, CHILES, GARLIC, SALT, CALIUM CITRIC ACID, XANTHAN GUM), BUTTERMILK (CULTURED SKIM MILK, BUTTERFAT, SALT), SUGAR, WHITE WINE VINEGAR, NATURAL AND ARTIFICIAL FLAVORS, WATER, EGG YOLKS, SALT, JALAPENO PEPPER, DEHYDRATED GARLIC, PHOSPHORIC ACID, XANTHAN GUM, SPICES, POTASSIUM ACID, SODIUM BENZOATE AND POTASSIUM SORBATE (AS PRESERVATIVES), DEHYDRATED PARSLEY (CITRIC ACID, CALCIUM OXIDUM/IRON ADDED TO PRETECT FLAVOR), CORN, BLACK BEANS (BLACK BEANS, SALT), CHEESE BLEND (MOZARELLA, JACK, CHEESE AND QUESADILLA CHEESE (PASTEURIZED MILK, CHEESE CULTURE, SALT, ENZYMES), QUESADILLA CHEESE AND CHEDDAR CHEESE (PASTEURIZED MILK, CHEESE CULTURE, SALT, ENZYMES, ANNATTO (VEGETABLE COLOR), POTATO STARCH AND POWDERED CELLULOSE (TO PREVENT CLOTTING), NATURAL FLAVORS), NATURAL MILD BAYNETT), TORTILLA STRIPS (WHITE CORN, YELLOW CORN, BLUE CORN, SUNFLOWER OIL OR CORN OIL, RED BEET POWDER, SEA SALT, WATER, TRACE OF LIME), PEPPERS/PAPRIKA SEEDS, SOYBEAN OIL, AVOCADO COTTONSEED OIL, SALT), CONTAINS EGGS, MILK, SOY, WHEAT.



DIST. BY READY PAC FOODS, INC., IRVINGDALE, CA 9076 USA • 1-800-800-7822 www.readypac.com

READY PAC, READY PAC Logo and READY PAC BISTRO are registered trademarks of Ready Pac Foods, Inc.

27176 - Target Bwl ChikCaesar 6/6.50oz



27209 - Bistro ChknGuacD6Bowl 6/7.90oz



CHICKEN & GUACAMOLE SALAD

Nutrition Facts
Serving Size 1 bowl (224g)
Amount Per Serving
Calories 350 Calories from Fat 210
% Daily Value*

Total Fat 23g	35%
Saturated Fat 5g	25%
Trans Fat 0g	
Cholesterol 25mg	8%
Sodium 810mg	34%
Total Carbohydrate 25g	8%
Dietary Fiber 6g	24%
Sugars 8g	
Protein 13g	22%
Vitamin A 150%	Vitamin C 15%
Calcium 15%	Iron 10%

*Percent Daily Values are based on a 2,000 calorie diet. Your daily values may be higher or lower depending on your calorie needs:
Calories: 2,000 2,500
Total Fat Less than 65g 80g
Sat Fat Less than 20g 25g
Cholesterol Less than 300mg 300mg
Sodium Less than 2,400mg 2,400mg
Total Carbohydrate 300g 375g
Dietary Fiber 25g 30g
Protein 50g 65g

Calories per gram:
Fat 9 • Carbohydrate 4 • Protein 4

INGREDIENTS: ROMANE LETTUCE, CHIPOTLE HONEY VINAIGRETTE (SOYBEAN OIL AND/OR CANOLA OIL, HONEY, WATER, CHIPOTLE PEPPER SAUCE (CHIPOTLE PEPPER PUREE (WATER, CHIPOTLE PEPPERS), WATER, DISTILLED VINEGAR, SUGAR, SALT, ONION POWDER), RED WINE VINEGAR, SALT, GARLIC, CONTAINS LESS THAN 2% OF: CHIPOTLE, CHILI PEPPER, NATURAL FLAVORS, ROSEMARY EXTRACT, SPICES, XANTHAN GUM), GUACAMOLE (PASS AVOCADO, TOMATILLO, DEHYDRATED ONION, SEA SALT, JALAPENO PEPPER, DEHYDRATED GARLIC, GARLIC, DEHYDRATED CILANTRO, DEHYDRATED JALAPENO, CILANTRO ESSENTIAL OIL), OVEN ROASTED CHICKEN BREAST MEAT WITH RIB MEAT (CHICKEN BREAST MEAT WITH RIB MEAT, WATER, LESS THAN 2% RICE STARCH, LEMON JUICE CONCENTRATE, VINEGAR, SALT, SUGAR, YEAST EXTRACT, NATURAL FLAVORS), BLACK BEANS, FIRE ROASTED CORN, PEPPER JACK CHEESE (MONTEREY JACK CHEESE WITH FIESTA PEPPER BLEND (PASTEURIZED MILK, PEPPER BLEND (SWEET CHILI, JALAPENO, SERRANO, HABANERO), CHEESE CULTURE, SALT, ENZYMES), POTATO STARCH (TO PREVENT CAKING), POWDERED CELLULOSE (TO PREVENT CAKING), NATAMYCN (MOLD INHIBITOR)), SEASONED TORTILLA STRIPS AND RED PEPPER AND JALAPENO CRISPS (SEASONED TORTILLA STRIPS (CORN MASA FLOUR, SUNFLOWER, SAFFLOWER AND/OR CANOLA OIL, SEASONING (TOMATO POWDER, SALT, ONION POWDER, GARLIC POWDER, PAPRIKA (COLOR), SPICES, MALTODEXTRIN, SUGAR, CORN SYRUP SOLIDS, SAFFLOWER OIL, JALAPENO PEPPER POWDER, YEAST EXTRACT, CHILI PEPPER, LIME JUICE SOLIDS, DEHYDRATED CILANTRO, DISODIUM INOSINATE, DISODIUM GUANYLATE, SUNFLOWER OIL, NATURAL FLAVORS)), RED PEPPER AND JALAPENO CRISPS (ENRICHED FLOUR (WHEAT FLOUR, NIACIN, REDUCED IRON, THIAMIN MONONITRATE, RIBOFLAVIN, FOLIC ACID), SUNFLOWER, SAFFLOWER AND/OR CANOLA OIL, RED BELL PEPPERS, JALAPENO PEPPERS, SALT)), RED CABBAGE.
CONTAINS: MILK, WHEAT

DISTRIBUTED BY: READY PAC FOODS, INC., IRWINDALE, CA 91706 USA
1-800-800-7822 www.readypac.com
©2019 READY PAC FOODS, INC.
READY PAC, READY PAC LOGO and READY PAC BISTRO are registered trademarks of Ready Pac Foods, Inc.

0 77745 27209 2 102335

27220 - MS Prem BLT Salad 6/6.81oz

Marketside

BLT

SALAD WITH TURKEY AND UNCURED BACON
 ROMAINE AND ICEBERG LETTUCE, GRAPE TOMATOES, TURKEY BREAST, UNCURED BACON, CHEDDAR CHEESE AND CREAMY AVOCADO DRESSING

INSPECTED BY U.S. DEPARTMENT OF AGRICULTURE

FORK INCLUDED

SEE BACK PANEL FOR INGREDIENTS USED TO PRESERVE QUALITY

FREE FROM
 Synthetic Colors
 Artificial Preservatives
 Artificial Flavors

370 **15g**
 Calories Per Serving Protein Per Serving

KEEP REFRIGERATED • PERISHABLE

102170

NET WT 6.81 OZ (193g)

servings suggestion

440811

BLT SALAD WITH TURKEY & UNCURED BACON 6 8 1 1 3 1 2 2 1 2 0 7

Thoughts? Ideas? Feedback? Call 1-888-658-6325 or visit walmart.com/marketside

Nutrition Facts	Amount/serving	% DV	Amount/serving	% DV
	1 serving per container	Total Fat 32g	41%	Total Carb. 7g
Serving size 1 Bowl (193g)	Sat. Fat 8g	40%	Fiber 2g	7%
Calories per serving 370	Trans Fat 0g		Total Sugars 3g	
	Cholesterol 50mg	17%	Incl. 1g Added Sugars	2%
	Sodium 850mg	37%	Protein 15g	26%
	Vitamin D 0% • Calcium 10% • Iron 8% • Potassium 10%			

INGREDIENTS: LETTUCE MIX (ROMAINE AND ICEBERG LETTUCES), CREAMY AVOCADO DRESSING (SOYBEAN OIL AND/OR CANOLA OIL, WATER, GUACAMOLE [AVOCADOS, DEHYDRATED ONION, WHITE VINEGAR, SALT, GRANULATED GARLIC], CILANTRO, WHITE WINE VINEGAR*, PEPIA SEEDS, EGG YOLK, SUGAR, CONTAINS LESS THAN 2% OF: DEHYDRATED RED BELL PEPPER, GARLIC, LACTIC ACID*, LIME JUICE CONCENTRATE*, NATURAL FLAVORS, SALT*, SPICES [CONTAINS MUSTARD], XANTHAN GUM), GRAPE TOMATOES, SMOKED TURKEY BREAST (TURKEY BREAST, WATER, VINEGAR*, POTATO STARCH, CONTAINS 2% OR LESS OF SEA SALT, POTASSIUM CHLORIDE, CELERY POWDER, CARRAGEENAN, NATURAL FLAVORING [ROSEMARY EXTRACT]), UNCURED BACON - NO NITRITES OR NITRATES ADDED EXCEPT THOSE NATURALLY FOUND IN SEA SALT AND CULTURED CELERY JUICE (PORK, WATER, SEA SALT*, SUGAR, NATURAL SMOKE FLAVOR, CULTURED CELERY JUICE), SHREDDED CHEDDAR CHEESE (CHEDDAR CHEESE [PASTEURIZED MILK, CHEESE CULTURE, SALT*, ENZYMES, ANNATTO (VEGETABLE COLOR)], POWDERED CELLULOSE [TO PREVENT CAKING], NATAMYCIN [MOLD INHIBITOR]*).
 *TO PRESERVE QUALITY.
 CONTAINS MILK AND EGGS.
 DISTRIBUTED BY: Walmart Inc., Bentonville, AR 72716

102159

27221 - MS Prem AvoRnch 6/7.45 oz



27204 - MS Bistro ChknCaesr6/6.25oz



27207 - MS Bowl DSChcknCaesr4/12oz



27217 - MS Bistro Chef 6/7.25oz

marketside
CHEF SALAD

CRISP ICEBERG AND ROMAINE LETTUCCES, TURKEY, UNCURED HAM, SWISS CHEESE AND CREAMY RANCH DRESSING

NET WT
7.25 OZ
(206g)

130 Calories Per Serving
7g Protein Per Serving

KEEP REFRIGERATED • PERISHABLE

102174

440811

CHEF SALAD 6 81131 16080 3 visit walmart.com/marketside

Thoughts?
Ideas? Feedback?
Call 1-888-658-6325 or
visit walmart.com/marketside

	Amount/serving	% DV	Amount/serving	% DV
Nutrition Facts	Total Fat 10g	13%	Total Carb. 4g	1%
about 2 servings per container	Sat. Fat 2g	10%	Fiber <1g	3%
Serving size 1 Cup (100g)	Trans Fat 0g		Total Sugars 2g	
Calories per serving 130	Cholesterol 20mg	7%	Incl. <1g Added Sugars	1%
	Sodium 340mg	15%	Protein 7g	11%
	Vitamin D 0% • Calcium 6% • Iron 2% • Potassium 4%			

INGREDIENTS: ICEBERG AND ROMAINE LETTUCCES, RANCH DRESSING (CANOLA OIL, NONFAT BUTTERMILK [WHEY, WATER, SKIM MILK POWDER, CORN STARCH, TAPIOCA STARCH, CARRAGEENAN, LOCUST BEAN GUM, CULTURE], WATER, MALTODEXTRIN, WHITE WINE VINEGAR*, EGG YOLK, SALT, SUGAR, BUTTERMILK POWDER, DISTILLED VINEGAR*, SEASONING BLEND [SALT*, MALTODEXTRIN, MODIFIED CORN STARCH, DRIED ONION, DRIED GARLIC, AUTOLYZED YEAST EXTRACT, NATURAL FLAVOR, SPICE, PARSLEY, GUAR GUM], SODIUM CITRATE, DEXTROSE, XANTHAN GUM, BUTTER [CREAM, SALT*], DRIED GARLIC, DRIED ONION, SPICES, MUSTARD FLOUR, NATURAL FLAVORS, MODIFIED CORN STARCH), SMOKED TURKEY BREAST (TURKEY BREAST, WATER, VINEGAR*, POTATO STARCH, CONTAINS 2% OR LESS OF SEA SALT, POTASSIUM CHLORIDE, CELERY POWDER, CARRAGEENAN, NATURAL FLAVORING [ROSEMARY EXTRACT]), SMOKED UNCURED HAM- NO NITRATES OR NITRITES ADDED EXCEPT THOSE NATURALLY OCCURRING IN CELERY JUICE POWDER (PORK HAM, WATER, VINEGAR*, CONTAINS 2% OR LESS OF SEA SALT*, POTASSIUM CHLORIDE, TURBINADO SUGAR, CELERY JUICE POWDER*, CHERRY POWDER, NATURAL FLAVORING [ROSEMARY EXTRACT]), SHREDDED SWISS CHEESE (SWISS CHEESE [PASTEURIZED MILK, CHEESE CULTURE, SALT*, ENZYMES], POTATO STARCH [TO PREVENT CAKING], POWDERED CELLULOSE [TO PREVENT CAKING], NATAMYCIN [MOLD INHIBITOR]*), *TO PRESERVE QUALITY.

CONTAINS MILK AND EGGS.

DISTRIBUTED BY: Walmart Inc., Bentonville, AR 72716

102163

27218 - MS Bistro Santa Fe 6/6.35oz

marketside

SANTA FE STYLE SALAD WITH CHICKEN

ROMAINE LETTUCE, CHILI LIME SEASONED WHITE MEAT CHICKEN, FIRE ROASTED CORN, FOUR CHEESE BLEND, TORTILLA CHIPS AND SALSA RANCH DRESSING

NET WT
6.35 OZ
(180g)

BEST If Used By

280 Calories Per Serving
12g Protein Per Serving

KEEP REFRIGERATED • PERISHABLE
102173

440811
8113116079

SANTA FE STYLE SALAD WITH CHICKEN

Thoughts? Ideas? Feedback?
Call 1-888-658-6325 or visit walmart.com/marketside

Nutrition Facts	Amount/serving	% DV	Amount/serving	% DV
	1 serving per container	Total Fat 20g	26%	Total Carb. 15g
Serving size 1 Bowl (180g)	Sat. Fat 4.5g	23%	Fiber 3g	11%
Calories per serving 280	Trans Fat 0g		Total Sugars 5g	
	Cholesterol 35mg	12%	Incl. 2g Added Sugars	4%
	Sodium 580mg	25%	Protein 12g	20%
	Vitamin D 0% • Calcium 10% • Iron 8% • Potassium 8%			

INGREDIENTS: ROMAINE LETTUCE, SALSA RANCH DRESSING (SOYBEAN OIL AND/OR CANOLA OIL, TOMATOES, WATER, WHITE WINE VINEGAR*, SUGAR, EGG YOLK, CONTAINS LESS THAN 2% OF: CITRIC ACID*, DEHYDRATED BUTTERMILK, DEHYDRATED GARLIC, JALAPENO, LEMON JUICE CONCENTRATE*, NATURAL FLAVORS, ONION, RED PEPPER, SALT*, SPICES (CONTAINS MUSTARD), XANTHAN GUM), CHILI LIME SEASONED CHICKEN BREAST MEAT WITH RIB MEAT (CHICKEN BREAST MEAT WITH RIB MEAT, WATER, SOY SAUCE (WATER, SOYBEANS, WHEAT, SALT), LESS THAN 2% SPICES (INCLUDING PAPRIKA), RICE STARCH, BROWN SUGAR, SALT, VINEGAR*, NATURAL FLAVOR, CHILI PEPPER, CILANTRO, SUGAR, CANOLA OIL, LIME OIL), FIRE ROASTED CORN, SHREDDED CHEESE BLEND (MONTEREY JACK AND QUESO QUESADILLA CHEESE (PASTEURIZED MILK, CHEESE CULTURE, SALT*, ENZYMES), ASADERO AND CHEDDAR CHEESE (PASTEURIZED MILK, CHEESE CULTURE, SALT*, ENZYMES, ANNATTO (VEGETABLE COLOR)), POTATO STARCH AND POWDERED CELLULOSE (TO PREVENT CAKING), NATAMYCIN (A MOLD INHIBITOR)*), SEASONED TORTILLA CHIPS (STONE GROUND CORN MASA FLOUR, SUNFLOWER AND/OR SAFFLOWER OIL, NACHO SEASONING (WHEY, SALT*, LACTOSE, TOMATO POWDER, BUTTERMILK, CULTURED NONFAT MILK, WHEY PROTEIN CONCENTRATE, MALTODEXTRIN, ONION POWDER, ENZYME MODIFIED ROMANO CHEESE (PASTEURIZED COW'S MILK, CULTURES, SALT*, ENZYMES), NATURAL FLAVORS, CITRIC ACID*, LACTIC ACID*, GARLIC POWDER, CHILI PEPPER, EXTRACTIVE OF PAPRIKA (COLOR)), CHILI LIME SEASONING (WHEY, SOUR CREAM POWDER (CULTURED CREAM, NONFAT MILK), SALT*, SPICES, PAPRIKA (COLOR), CITRIC ACID*, NATURAL LIME FLAVOR, EXTRACTIVE OF PAPRIKA (COLOR), SPICE EXTRACTIVE)), *TO PRESERVE QUALITY.

CONTAINS MILK, EGGS, WHEAT AND SOY.
DISTRIBUTED BY: Walmart Inc., Bentonville, AR 72716
102162

27219 - MS Bowl DS Sthwst 4/11.75oz



440811

SOUTHWEST
STYLE SALAD
WITH CHICKEN

6 81131 16093 3

Thoughts?
Ideas? Feedback?
Call 1-888-658-6325 or
visit walmart.com/marketside

Nutrition Facts	Amount/serving	% DV	Amount/serving	% DV
about 3.5 servings per container	Total Fat 10g	13%	Total Carb. 7g	3%
Serving size 1 Cup (100g)	Sat. Fat 2g	10%	Fiber 2g	7%
Calories per serving 140	Trans Fat 0g		Total Sugars 2g	
	Cholesterol 20mg	7%	Incl. <1g Added Sugars	2%
	Sodium 270mg	12%	Protein 7g	12%
	Vitamin D 0% • Calcium 6% • Iron 6% • Potassium 4%			

INGREDIENTS: ROMAINE LETTUCE, CHILI LIME SEASONED CHICKEN BREAST MEAT WITH RIB MEAT (CHICKEN BREAST MEAT WITH RIB MEAT, WATER, SOY SAUCE [WATER, SOYBEANS, WHEAT, SALT], LESS THAN 2% SPICES [INCLUDING PAPRIKA], RICE STARCH, BROWN SUGAR, SALT*, VINEGAR*, NATURAL FLAVOR, CHILI PEPPER, CILANTRO, SUGAR, CANOLA OIL, LIME OIL), SALSA RANCH DRESSING (SOYBEAN OIL AND/OR CANOLA OIL, TOMATOES, WATER, WHITE WINE VINEGAR*, SUGAR, EGG YOLK, CONTAINS LESS THAN 2% OF: CITRIC ACID*, DEHYDRATED BUTTERMILK, DEHYDRATED GARLIC, JALAPENO, LEMON JUICE CONCENTRATE*, NATURAL FLAVORS, ONION, SALT*, SPICES [CONTAINS MUSTARD], XANTHAN GUM), SHREDDED CHEESE BLEND (MONTEREY JACK AND QUESO QUESADILLA CHEESE [PASTEURIZED MILK, CHEESE CULTURE, SALT*, ENZYMES], ASADERO AND CHEDDAR CHEESE [PASTEURIZED MILK, CHEESE CULTURE, SALT*, ENZYMES, ANNATTO [VEGETABLE COLOR]], POTATO STARCH AND POWDERED CELLULOSE [TO PREVENT CAKING], NATAMYCIN [MOLD INHIBITOR]*), TRI-COLOR TORTILLA STRIPS (STONE GROUND WHITE, YELLOW AND BLUE CORN MASA FLOUR, SUNFLOWER AND/OR CORN OIL, SEA SALT*, BEET JUICE CONCENTRATE [COLOR]). *TO PRESERVE QUALITY

CONTAINS MILK, EGGS, WHEAT AND SOY.

DISTRIBUTED BY: Walmart Inc., Bentonville, AR 72716

102169